

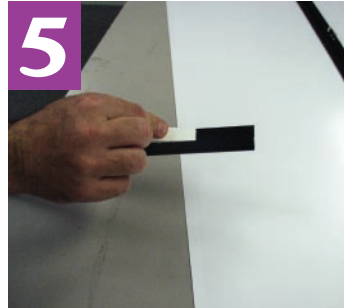
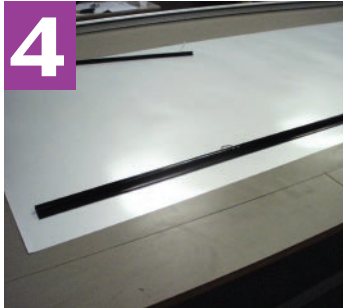
# MagicPak<sup>®</sup>

BANNER SYSTEMS

# Set Up

and graphic replacement instructions

## Retractable Banner System



**1** Pull graphic out to leader film - insert locking pin in to prevent leader from rolling back into case. Take old graphic off of leader film.

**2** Apply new double sided adhesive to leader and attach new graphic.

**3** Remove header bar from old graphic.

**4** Peel old adhesive off of header bar.

**5** Apply new double-sided adhesive to header bar and apply to new graphic.

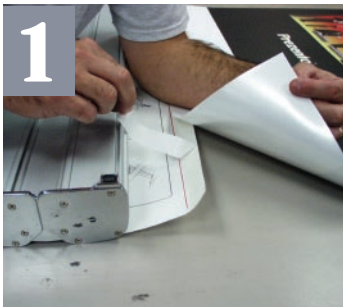
# MagicPak<sup>®</sup>

BANNER SYSTEMS

# Set Up

and graphic replacement instructions

## Doublesided Retractable Banner System



**1** Pull graphic out to leader film - insert locking pin in to prevent leader from rolling back into case. Take old graphic off of leader film.

**2** Apply new double sided adhesive to leader and attach new graphic.

**3** Remove header bar from old graphic.

**4** Slide header bar onto new graphic.

**5** Once graphic is secure, snap header bar down onto new graphic.

**6** Take locking pin out. With pressure on banner, slowly allow to retract into case.